

***CENTROFFICIO***  
*spa*

COMPANY  
PROFILE **2024**

# ABOUT US

TheCentrufficioS.p.A.Groupwasfoundedin1986andspecializes in design, production, marketing, and installation of office furniture and partition walls. Over the years, several business lines have been opened, in addition to furnishings, including contract (which deals with the fit-out of premises), custom-made furniture, joinery, and photovoltaics. Thanks to these divisions, Centrufficio S.p.A. is able to provide a comprehensive service from A to Z: from interior design to the inauguration of furnished and renovated premises.

190

21

4

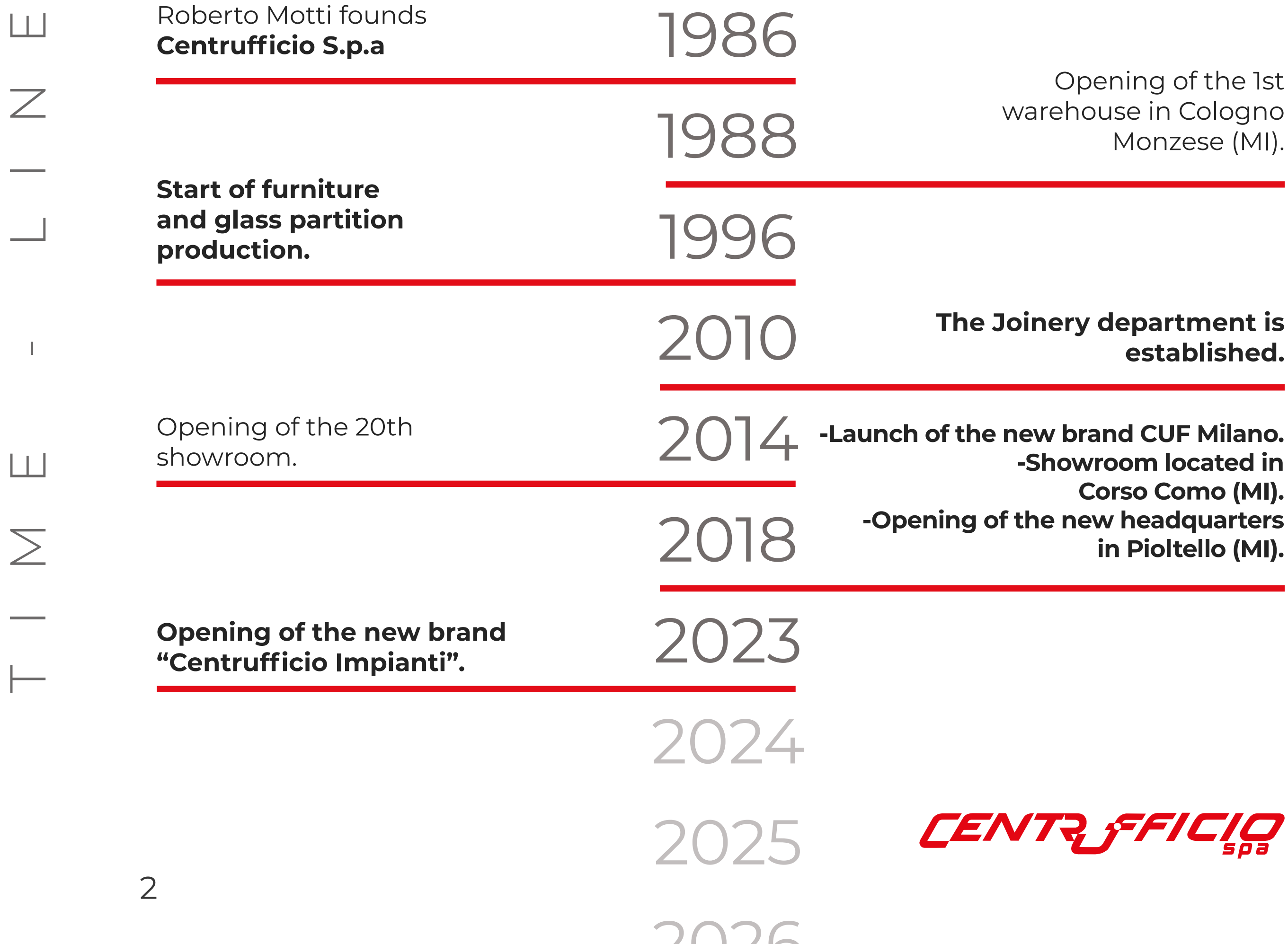
52<sub>M</sub>

EMPLOYEES

SHOWROOM

WAREHOUSES

TURNOVER

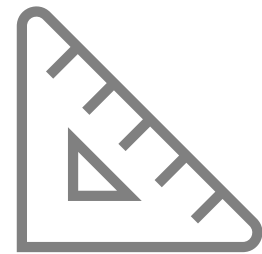


# OUR STRENGTHS

---



**READY FOR DELIVERY**



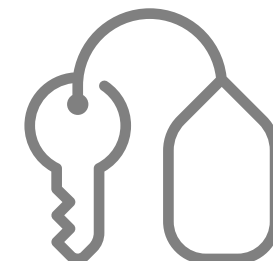
**FREE DESIGN**



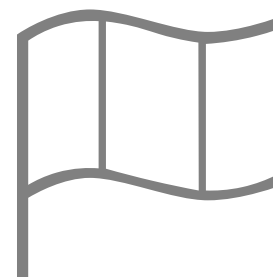
**CUSTOM FURNITURE AND  
PARTITIONS**



**TRANSPORTATION AND  
ASSEMBLY IN ITALY AND  
ABROAD**



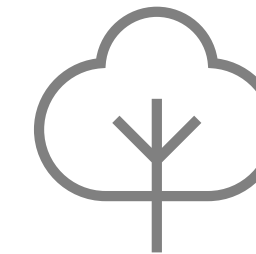
**TURNKEY SOLUTIONS AND  
PROJECT MANAGEMENT**



**ITALIAN DESIGN AND  
PRODUCTION**



**PRODUCT CERTIFICATION**



**BUSINESS AND  
ENVIRONMENTAL  
CERTIFICATIONS**



**SELECTION**

# OUR MISSION

---



## CUSTOMER SATISFACTION

Our customers are our greatest asset, their satisfaction is our primary goal. They are the value of our business



## ENVIRONMENTAL COMMITMENT

Producing products with a lower environmental impact, while ensuring quality and Made in Italy products.



## DESIGNCRACY

The creation of beautiful and stylish objects at affordable prices for everyone. For a 'democratic' design.



## OUR COLLABORATORS

They are our wealth and resource, they share the previous points and uphold them firmly. They ensure the future of our company.

# SUSTAINABILITY

Sustainability is one of the most important aspects for Centrufficio:

In addition to the more common operations involving the increased use of renewable energies, reduction of consumption, etc., Centrufficio commits to the environment in two main areas:

- **SUSTAINABLE PROJECTS:**

The R&D office is continuously researching new materials and products aimed at pursuing objectives related to the circular economy as much as possible. For example, the COFFICE planter, made from bioplastics derived from coffee waste, and the GLEB tables, made from materials derived from glass fiber waste.

- **- CERTIFICATIONS:**

In addition to UNI EN 14001, Centrufficio products are certified according to CAM (Minimum Environmental Criteria), including the use of CARB panels (low formaldehyde emission) and FSC (for the use of woods derived from controlled forests).



# CERTIFICATIONS



ISO 9001



SOA OS 6



GENDER EQUALITY



ISO 14001



FSC



LEED/WELL



ISO 45001



CAM



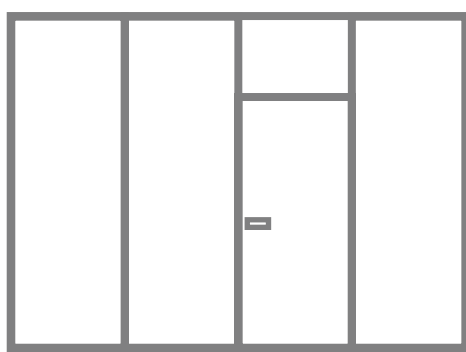
ANTI-CORRUPTION

# BUSINESS LINE

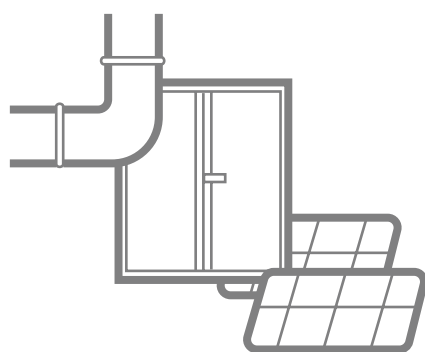
---



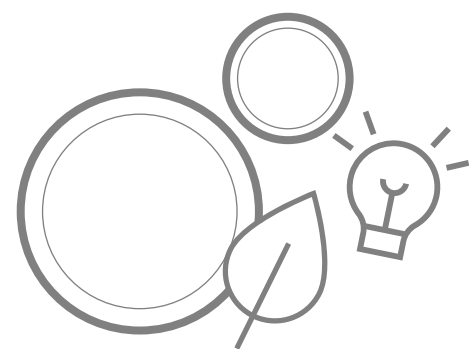
OFFICE FURNITURE



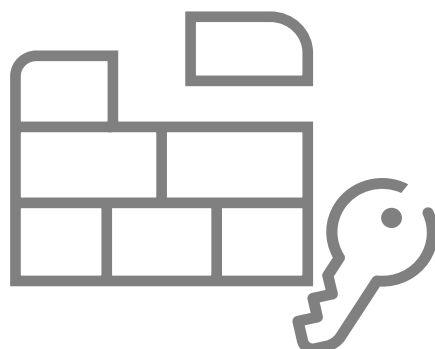
OFFICE PARTITION WALLS



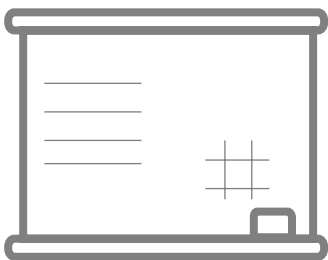
SYSTEMS, FIXTURES, AND PHOTOVOLTAICS



ACOUSTICS, LIGHTING, AND GREENERY

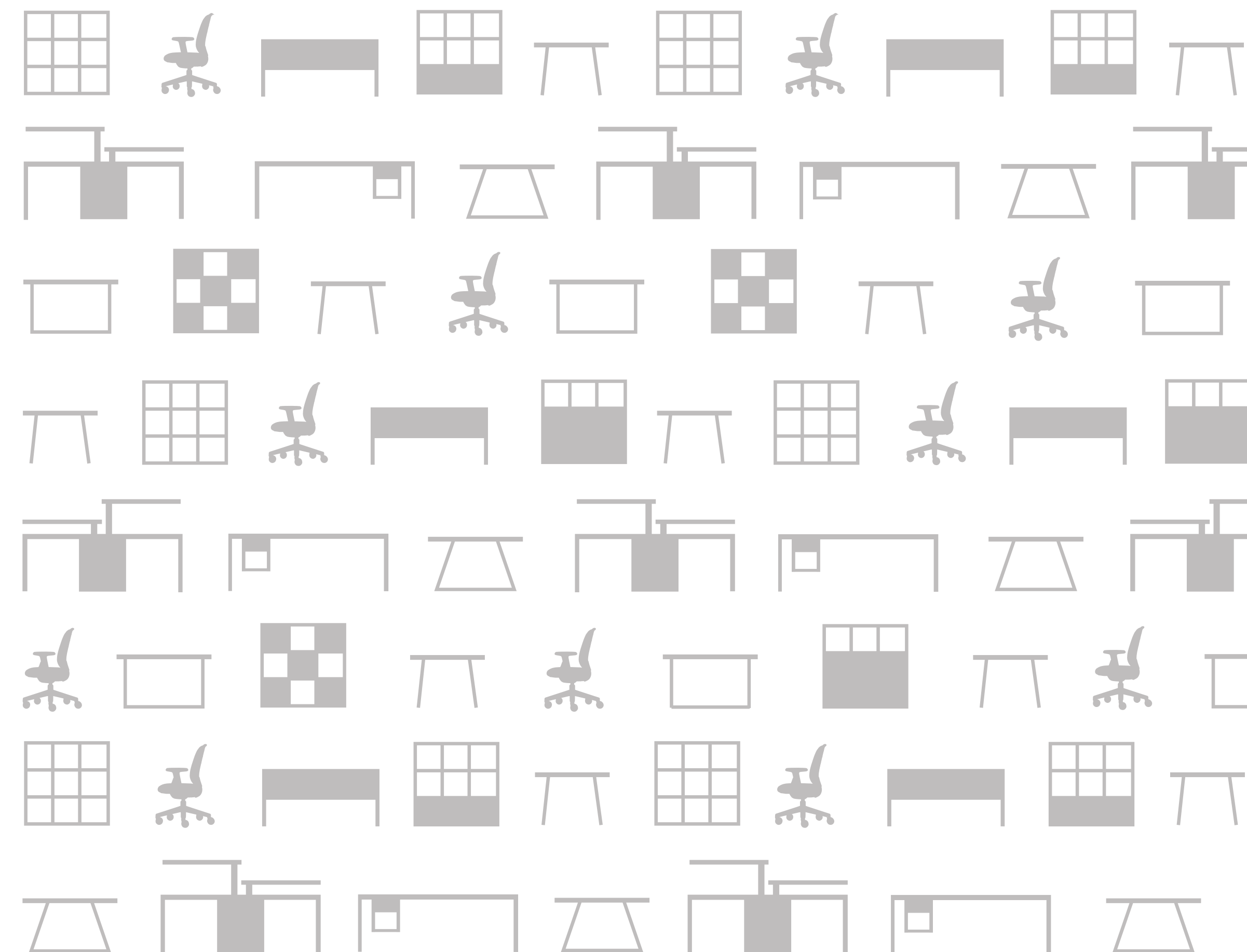


REFURBISHMENT AND TURNKEY SOLUTIONS



EDUCATIONAL

# NEW PRODUCTS 2023/2024





# FUSION

**Designer:** J. Bennet - S. Adachi



Fusion is an office system designed around people's behaviors and habits, catering to a new way of working that is more oriented towards socializing and sharing.

A variety of configurations create different atmospheres and landscapes, suitable for both individual work and co-working, as well as impromptu meetings and short breaks in a more relaxed and homely environment.





# FUSION OUTDOOR

Designer: J. Bennet - S. Adachi



After the award-winning Fusion, Fusion Outdoor is born, reimagining spaces by embracing the outdoors as a positive element in the work routine, organizing it in a contemporary yet natural way. Perfect for residential settings and less institutional environments.

Building upon the same concept of creating multifunctional environments, Fusion Outdoor further expands this premise by offering new solutions for gardens and terrace





# BOLD

**Designer:** Arch. M. Silverio



Bold originates from the idea of creating a directional system that breaks the mold, bold and audacious: hence the name, Bold. The archetype of furniture as we know it has been deconstructed and skillfully recomposed, giving rise to a new concept of balance.

The desk consists of a thin beech plywood top resting on a single off-centered leg, which gives a sense of suspension and equilibrium.



# JALEED

**Designer:** Arch. R. Fantini

Jaleed” in Arabic means ice: a sparkling, fluid, crystalline element that, like the new glass wall, represents the precise point where lightness and solidity intersect.

Jaleed is the result of years of mechanical research and acoustic experimentation that have led to the creation of an elegant, slim yet highly soundproof and robust wall.

#### CERTIFICATIONS:

Double glass wall: The sound insulation certification is 49 dB.

Door: The acoustic certification of the double glass door is 42 dB.





# CARTESIO

**Designer:** Arch. G. Giacobone - progetto CMR

Cartesio is a system composed of a modular metal structure with a light, simple, and elegant design, designed to meet the needs dictated by new lifestyles and work methods.

Its formal cleanliness makes it suitable for operational contexts, waiting or informal areas, as well as executive environments.

Cartesio consists of a metal grid into which locker boxes, wardrobe boxes, fixed shelves, seat cushions, and storage trays are inserted, which can also be turned into flower boxes when needed, making it a highly decorative yet functional piece of furniture.





# LAMBRATE

**Designer:** L. Glorini - S. Mauri

Lambrate is a modular metal system, but also a locker, a shelving bookcase, a classic office container, and also a system that can be integrated with desks: all in one.

The starting grid, created with sides and crosspieces, is completed with colorful locker boxes, wardrobe boxes, drawers, baskets, umbrella stands, flower boxes, shelves, hooks, and desks to furnish the working or domestic space according to one's needs.





# DIVA

**Designer:** I. Harari

Diva is a system of modular upholstered furniture designed to be more than just a sofa, shaping the environment and the way space is enjoyed thanks to the multitude of shapes it offers, in addition to the value of comfort and aesthetics.

With just a few components to assemble infinitely, you can achieve a series of countless configurations: armchair, inline sofa, corner sofa, U-shaped sofa, island sofa, lounge. With or without backrests, armrests, privacy panels, and coffee tables.

Thanks to Diva's design, the armchair or sofa becomes a welcoming place to work with a new sense of comfort. It doesn't aim to replace traditional workstations or meeting rooms; rather, it aims to enrich them with the variability of proposals that the 'soft' seating offers





# ACOUSTIC SOLUTIONS LED

**Designer:** Arch. P. Ripamonti

The Acoustic Solutions Led collection arises from the combination of the sound-absorbing panels from the Shapes and Tile&Megatile collections and the lighting element, thus combining two fundamental items for the office (lighting and sound absorption) into a single product.

The Acoustic Led panels fit into and integrate with the sound-absorbing panels that share the same design, creating an interesting interplay of combinations





# MICASA

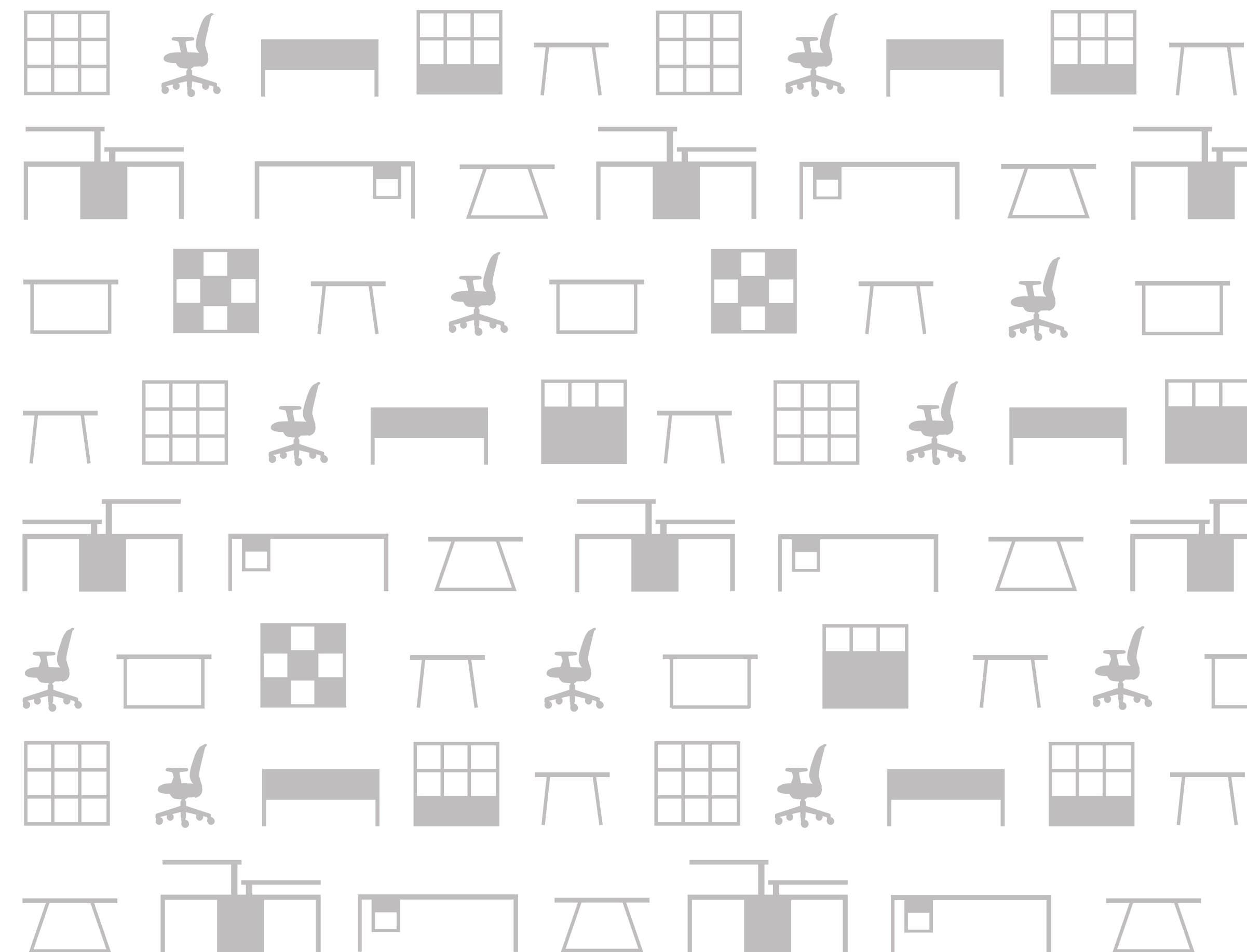
**Designer:** Arch. P. Ripamonti

Micasa aims to be, within the office, a comfortable, protective, and informal space; to be used for small meetings, confidential conversations, calls, grabbing a coffee, taking a break, for seclusion, and staying focused.

The internal area of 120×200 cm, with a height of 170/230 cm, is designed to be compact: comfortable, yet not cramped, and is functional for optimizing construction materials, avoiding waste.

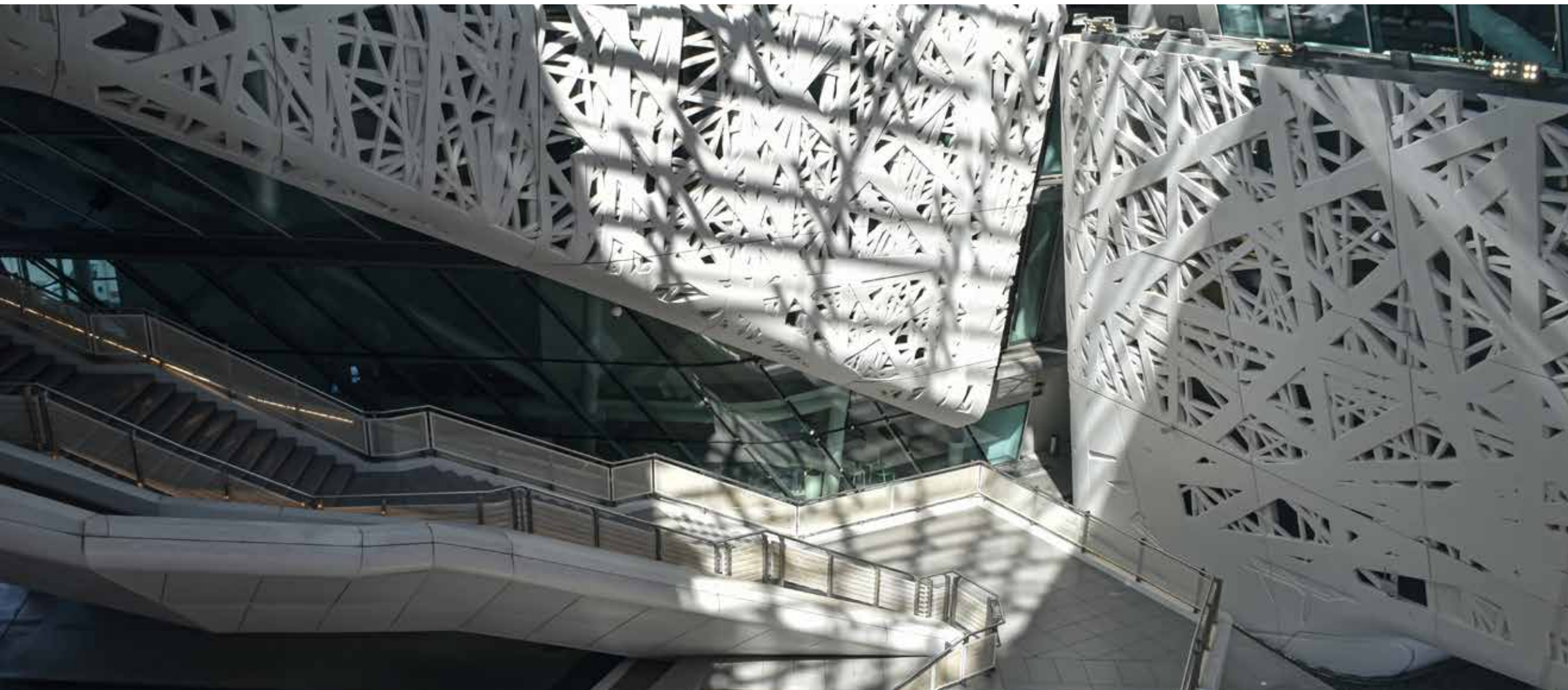


# CASE HISTORY





# HUMAN TECHNOPOLE



📍 MIND DISTRICT (former EXPO 2015 area, Palazzo Italia), Milan

📅 2022-2023

Designer: Arch. Paolo Turconi (R&S Centrufficio)

Contract Manager: Andrea Imbrosciano (Tender Office Manager, Centrufficio)

The project involves the redevelopment/renovation of the MIND area, specifically the Italian hall of Expo Milano 2015 - Palazzo "ITALIA".

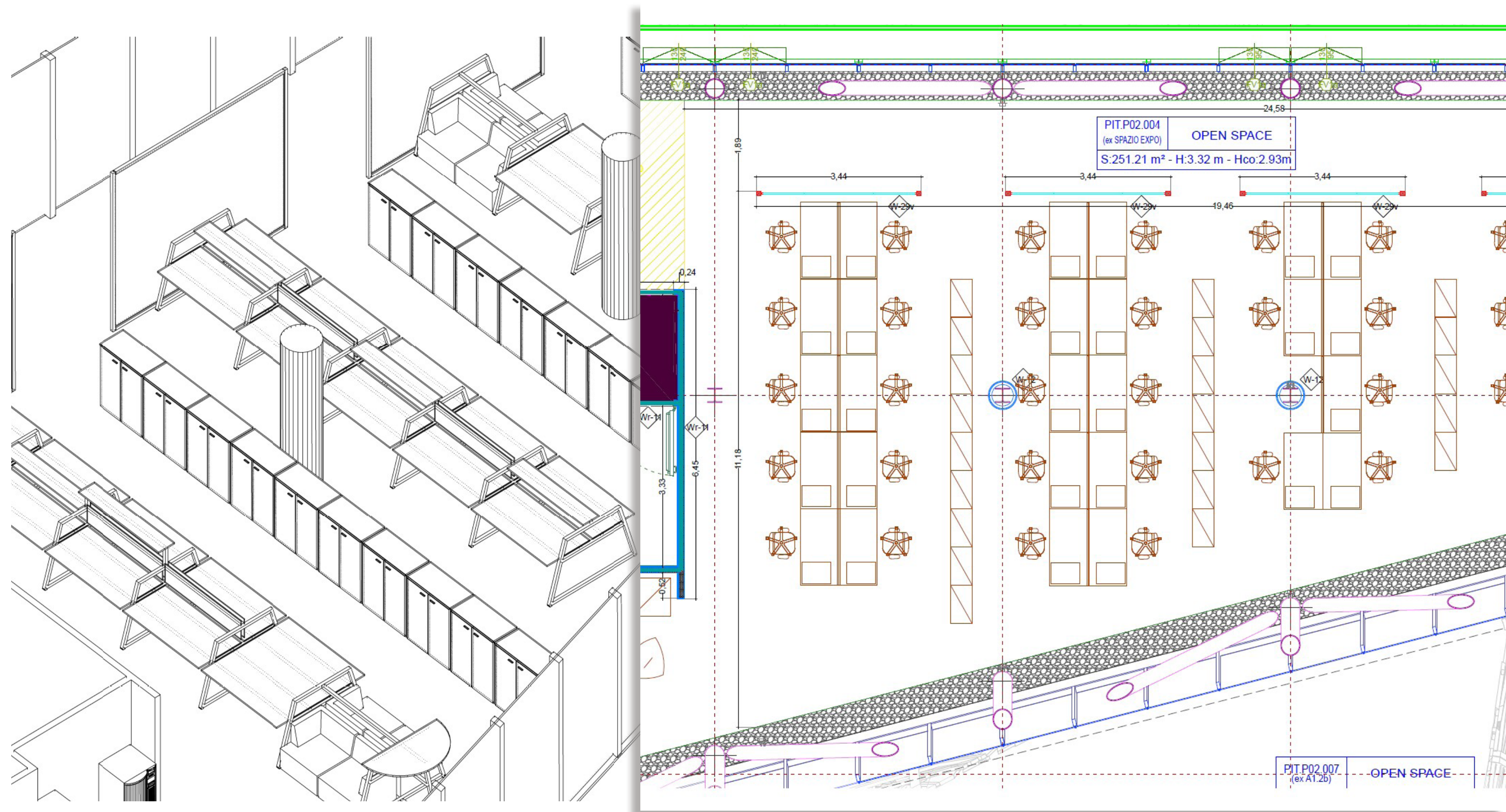
Over 400 workstations have been created with the aim of establishing a single research center to foster collaboration and bring added value to the Italian and European scientific research ecosystem, promoting innovation in the Healthcare System.



# 2D/3D

Human Technopole is a scientific research institute that has taken over the Palazzo Italia (formerly Expo 2015) in the province of Milan. It is a dynamic company experiencing strong growth and expansion, hence it required a design principle based on the flexibility of spaces. This means the ability to aggregate workstations, modify offices, transform entire work areas from course areas to meeting rooms, so that the furniture itself adapts to changes in personnel, and not vice versa.

For this reason, the floor plan and axonometric design have been conceived on two levels. On one hand, to use highly flexible and adaptable products (such as the Fusion Bench), and on the other, to create “hybrid” environments or spaces that can be modified according to the client’s needs.







# RENDER

Alongside the 2D and 3D design, rendered images were created to accurately showcase the aesthetic and functional aspects of the proposed furnishings within the context of Palazzo Italia. This involved recreating the floors, windows, as well as the typical beams of the Human Technopole headquarters.

The rendering also contextualized the furnishings within an environment rich in typical work accessories and complements (acoustic panels, lighting, plants, coat racks, etc.).

From the renders, it is possible to better visualize the flexibility of the proposed benches, for example, by incorporating sofas within the unoccupied workstations.



# REALIZATION

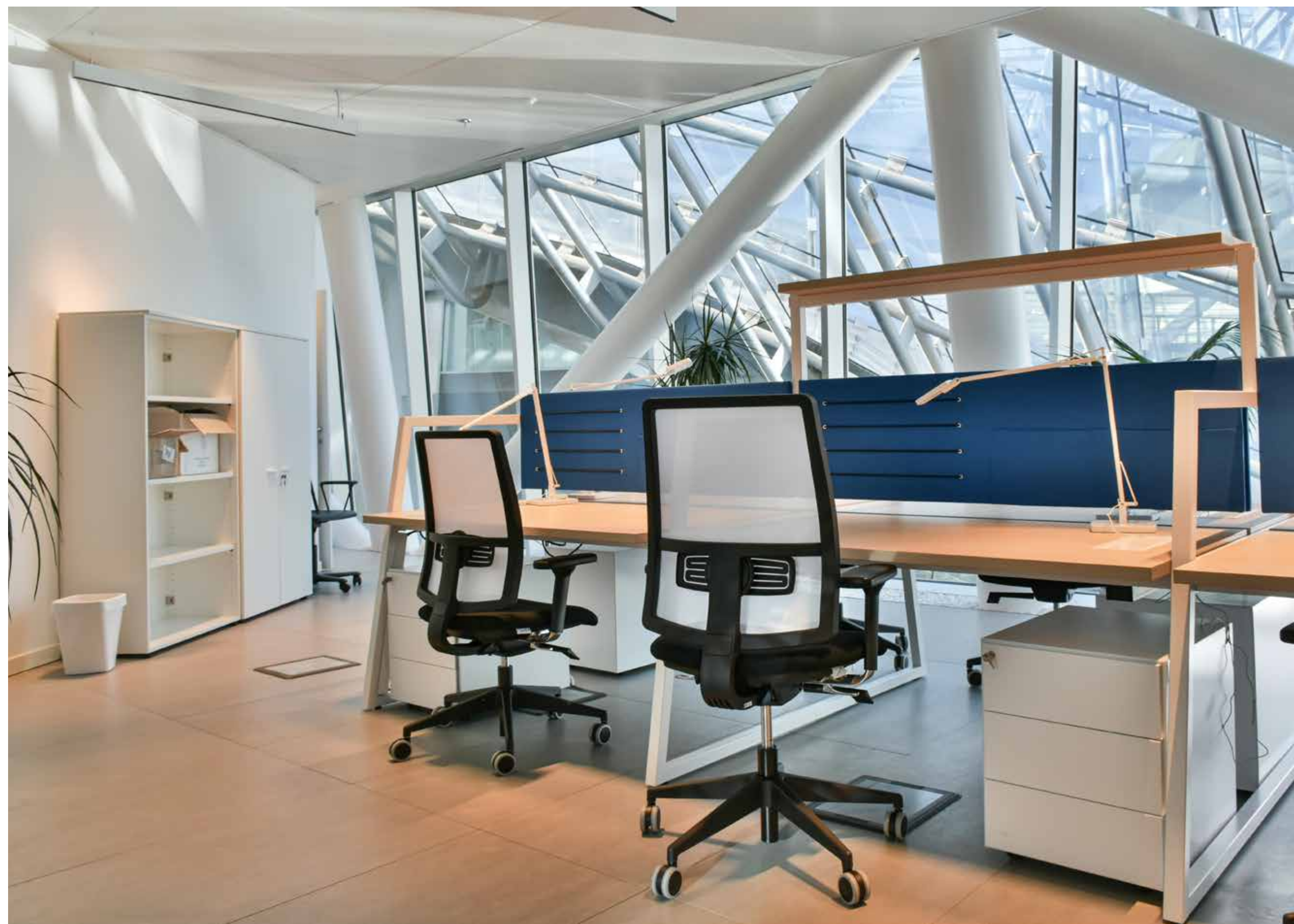
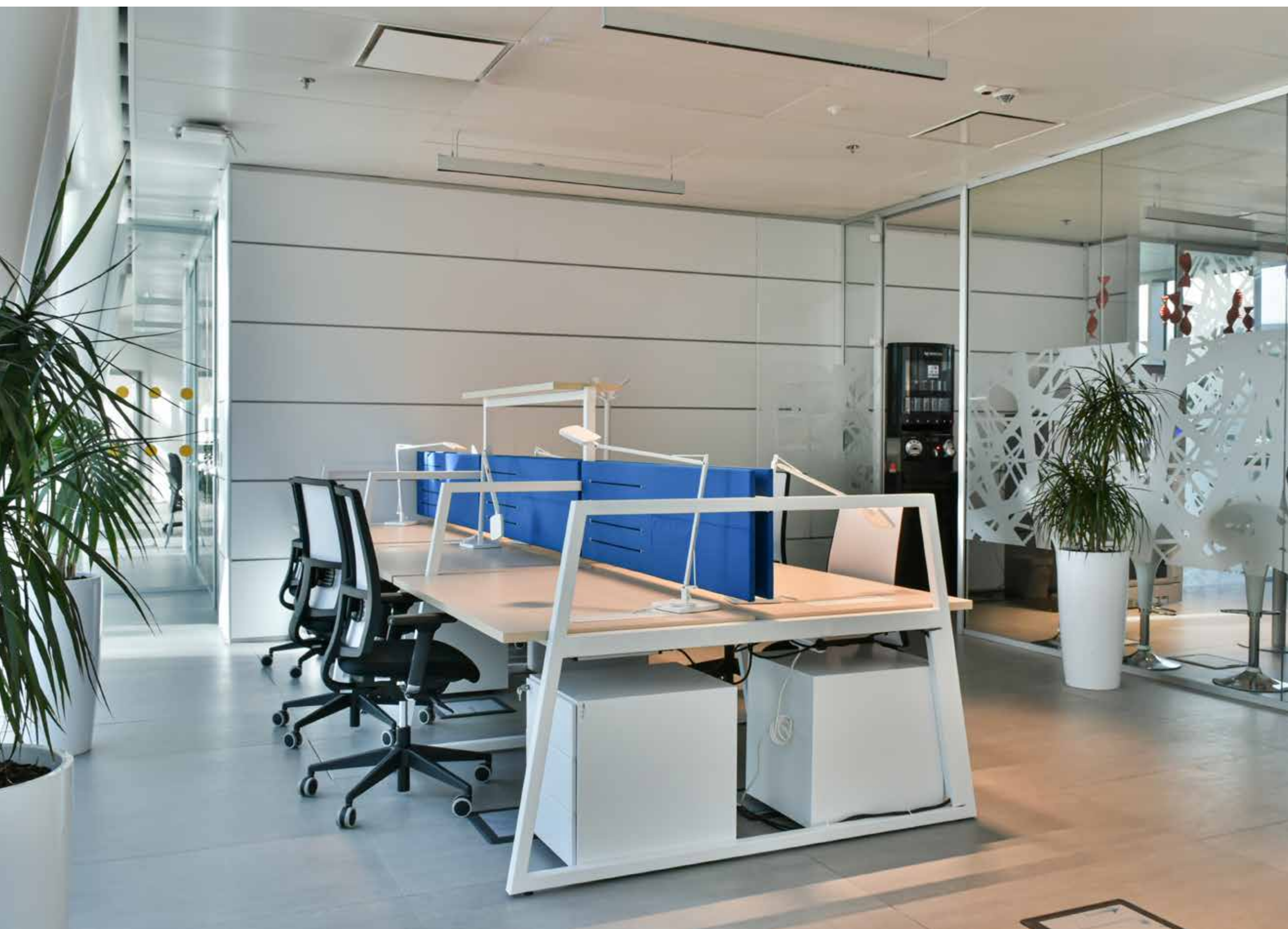
---

The delivery and assembly service was always managed by a works manager and their deputy, who were constantly present in the construction areas to liaise with the client's representatives and promptly resolve any issues.

Additionally, the service offered included replacement or warranty intervention within 24/48 hours of notification. This is made possible by the fact that we have a storage warehouse covering an area of 30,000 m<sup>2</sup>, as well as directly employed workers specialized in the assembly of furniture and office partitions.



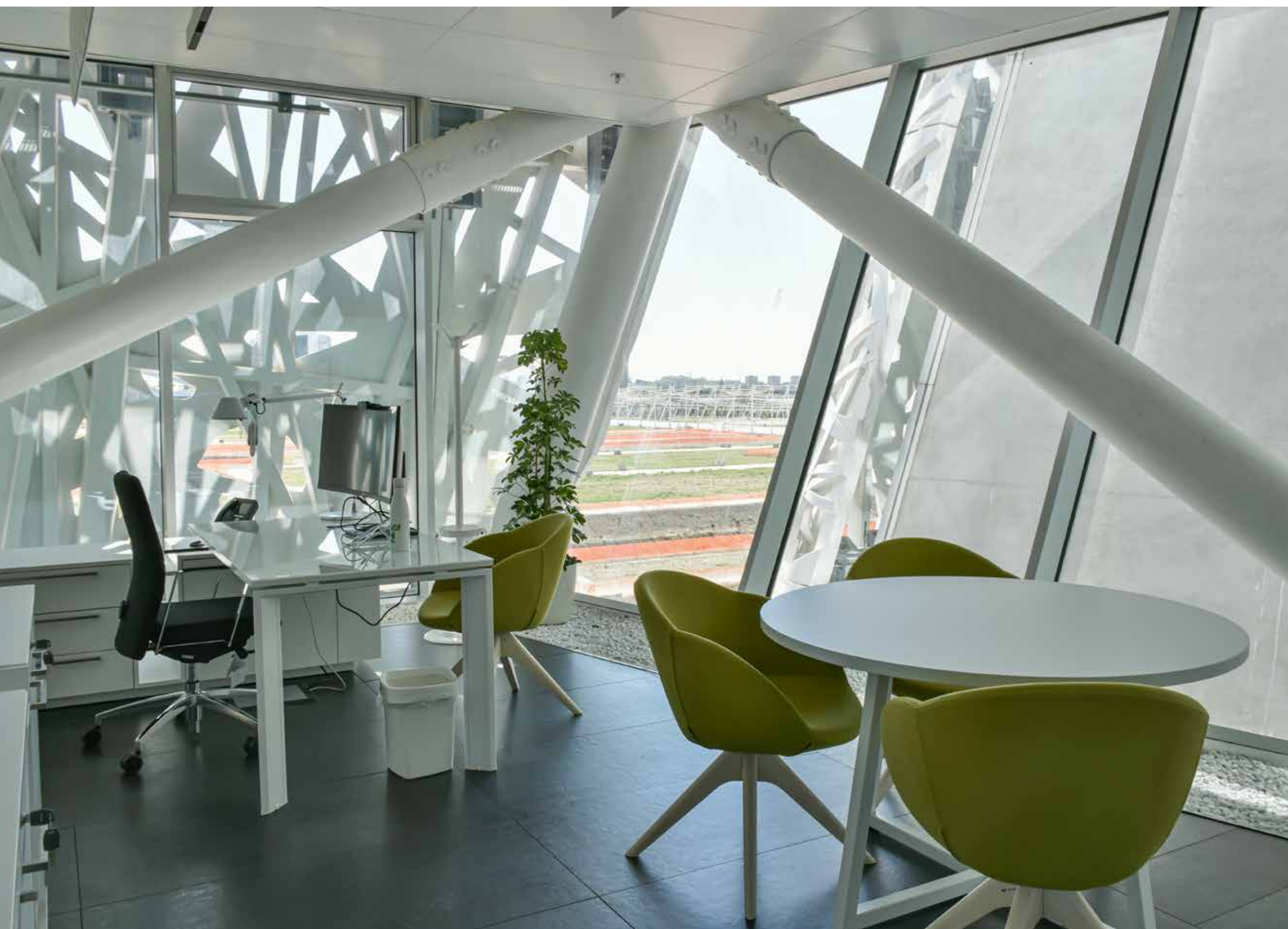




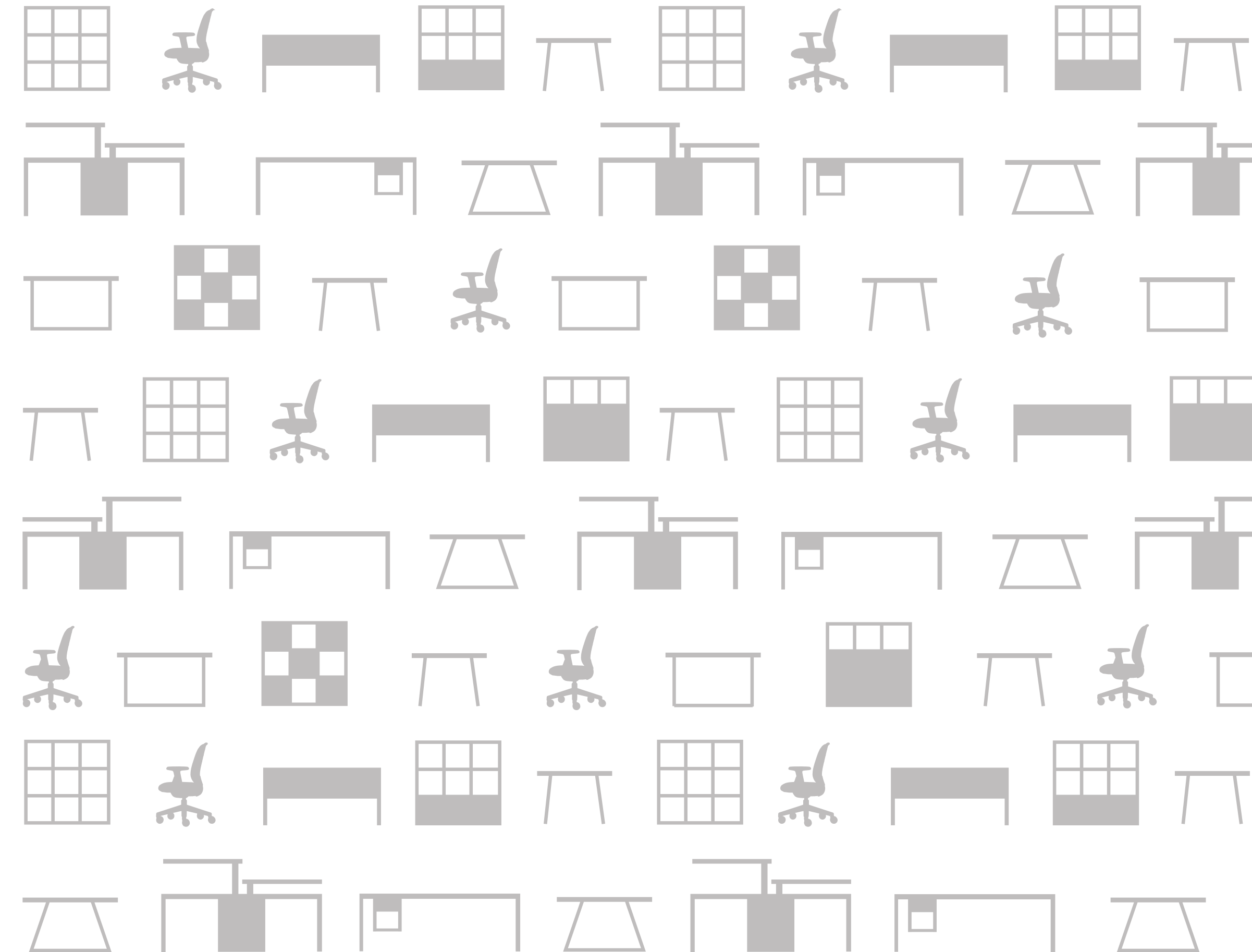








# PROJECTS







# WOLIBA

📍 Woliba Campus Reveal, Rome

📅 2021

DESIGNER : **Progetto CMR - Studio Bruno Pedroni**

Woliba is a life and business park based in Rome, aimed at improving the lives of those who work within it by finding the right balance between leisure time and work.

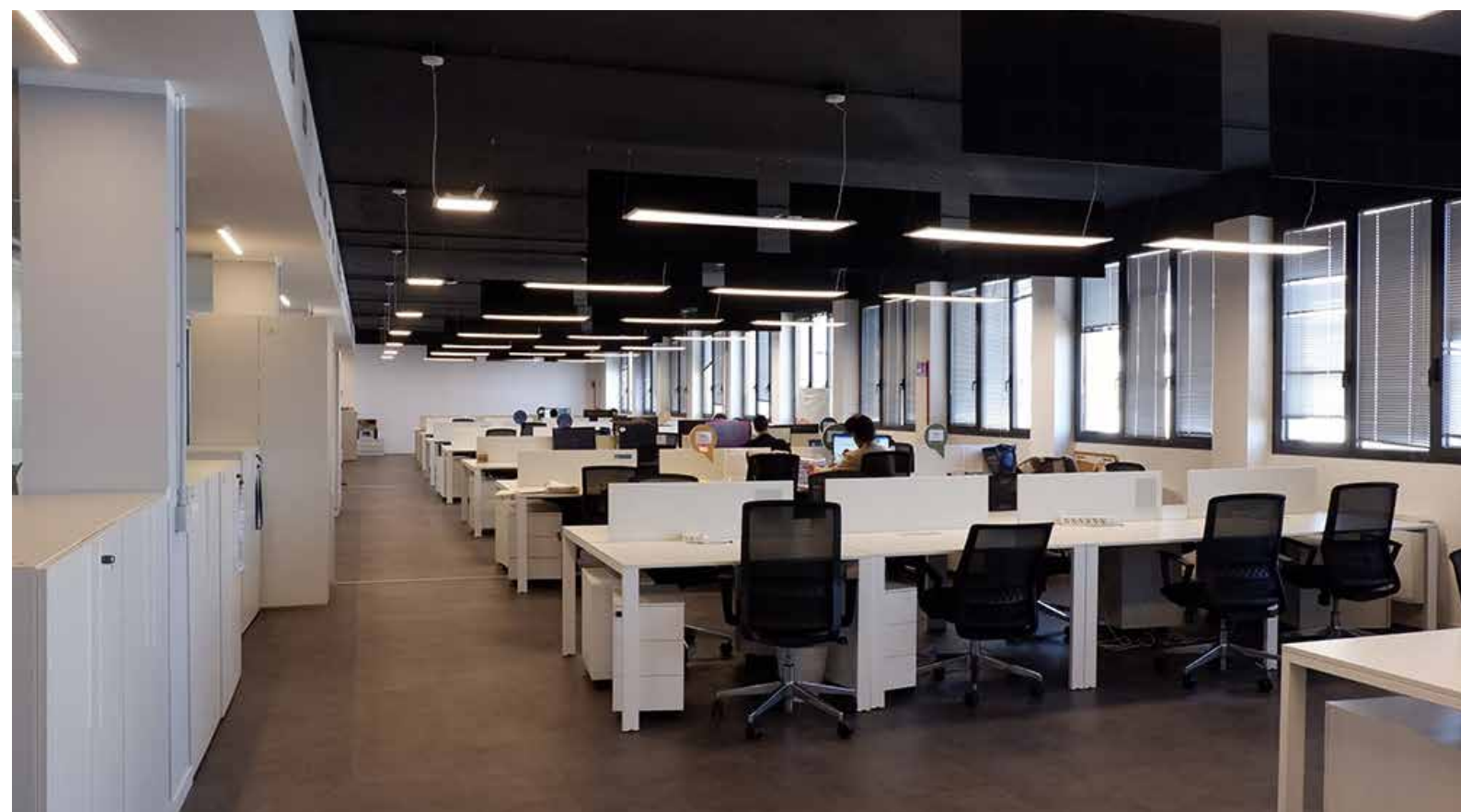
Centrufficio, in collaboration with the renowned architectural firm Progetto CMR and Studio Bruno Pedroni, was responsible for furnishing part of the offices, coworking spaces, and lounge area, seeking to reflect Woliba's innovative philosophy. The goal is to create functional workspaces that are also relaxing, enjoyable, comfortable, innovative, and sustainable

For the workspaces, which are smart and dynamic, the Seventy Seven bench system, designed by Progetto CMR - Giovanni Giacobone, was selected, along with the Cartesio locker system, known for its clean, linear, and simple design with a strong aesthetic impact.

Centrufficio also handled logistics, assembly, and customer assistance, providing a service with very short lead times (ready-to-deliver furnishings).

**CENTRUFFICIO**  
spa





# POLI - HUB

📍 Polihub Startup District & Incubator, Milan

📅 2023

DESIGNER : Arch. Paolo Turconi (Centrufficio)

For Polihub, Centrufficio managed the design, acoustical study, fabrication, and installation of a sound-absorbing panel system to improve acoustic comfort within common areas, open spaces, and individual offices.

In particular, panels from the Tetrax line were installed both wall-mounted and free-standing, as well as with wall application (Tetraxgame), to ensure not only significant acoustic intervention but also to create a positive aesthetic impact.





# PROGETTO CMR

📍 Offices Progetto CMR, Milan

📅 2019

The furnishings are made with benches from the Seventy-Seven line, designed in collaboration with Progetto CMR itself.

Cabinets are replaced by lockers, which allow for the accommodation of wardrobe space, storage space, open display spaces, or flower boxes.

The Seventy-Seven benches, extremely linear and geometric, are enriched by a central metal shelf, usable for accommodating sound-absorbing panels, monitors, or other stationery accessories.





# RAI PUBBLICITÀ

📍 RAI Pubblicità, Milan

📅 2023

DESIGNER : Arch. Paolo Turconi (Centrufficio)

The project involved the renovation of four distinct areas with different purposes: break area, meeting rooms, training rooms, and outdoor spaces.

In addition to the design and supply of furniture, seating, modular walls, Centrufficio also handled the actual fit-out of the spaces by providing roller blinds, stabilized greenery, kitchens, pergolas, flooring, and carpets.

Furthermore, custom carpentry products were supplied on demand for the creation of decorative vertical slats and bespoke furnishings.

**CENTRUFFICIO**  
spa



# CUSTOMERS



**CENTROFFICIO**  
spa

# CONTACTS

---

## OPERATIONAL HEADQUARTERS

📍 Via Sondrio 6/14  
Pioltello (MI)

## LEGAL ADDRESS:

📍 Via A. Doria 17  
Milano (MI)

## VAT N°:

00902270966

## TAX CODE:

08312370151

## RECEPTION:

☎ +39 022537771  
@ info@cuf.it

## TENDERS OFFICE MANAGER:

Andrea Imbrosciano:  
☎ +39 0225377262  
@ a.imbrosciano@cuf.it

## SALES & MARKETING MANAGER:

Davide Cerri:  
☎ +39 0225377204  
@ d.cerri@cuf.it

## WEBSITE:

🌐 [www.centrufficio.it](http://www.centrufficio.it)  
🌐 [www.cufmilano.com](http://www.cufmilano.com)

## SOCIAL:

in Centrufficio Spa - CUFMilano  
📷 cuf\_milano



***CENTROFFICIO***  
***spa***